



# REBUS CLUB OF KHANDALLAH

AFFILIATED WITH REBUS NZ INCORPORATED  
([www.rebus.nz](http://www.rebus.nz))

<https://khandallahrebus.wixsite.com/khandallahrebusclub>

## Newsletter

NOVEMBER 2025

---

### **NEXT REBUS MEETING: Friday 28th November 2025, at 10 am, Khandallah Bowling Club**

**Speaker:** Lawrence Meredith (Ambassador from the European Union to New Zealand). Lawrence plans to lead an interactive session at the meeting, and Natasha and the Committee have submitted topics of interest to him to speak about.

**Short Talk:** Roger Gyles

**Vote of Thanks:** Margaret Robertson

### **DECEMBER MEETING:**

#### **Rebus Christmas Lunch**



**Date:** Wednesday, 10th of December

**Venue:** The Pines, 50 The Esplanade, Houghton Bay

**Time:** Arrive from 11:30 am, seated for lunch at 12:00.

**Cost:** \$45 per person (Partners of members are welcome).

A glass of wine or orange juice is included in the price; you collect it at the bar on arrival.

Payment: The preferred method of payment is by Direct Credit to “**Rebus Club of Khandallah**” bank account: **03 0525 0220364 000**.

David Hutton, the Treasurer, will be absent but Jenny Cornelius will take cash payments at the meeting for those who are unable to use Internet Banking.

**Last day for booking and paying: Friday, 28th November.**

**Last day for cancellations: Tuesday, 9th December by 10am.** Please be aware that there will be **no refunds after this time.**

To book (other than at the Club meetings), please contact Jenny: phone 027 272 5659 or email [corneliusj746@gmail.com](mailto:corneliusj746@gmail.com)

### **30 JANUARY 2026 MEETING**

**Speaker:** Lisa Theron – Yes for Success

**Short Talk:** Linda Sissons

**Vote of Thanks:** Judy Barker

### **FROM THE PRESIDENT**

Our speaker this month is Lawrence Meredith, the European Union Ambassador to NZ. This is going to be an interactive meeting (questions and answers) rather than a ‘straight’ talk. The committee has considered several topics for questions but there may be time for more questions from the floor. It should be interesting.

Christmas seems to come earlier each year. The final Rebus committee meeting of the year took place last Wednesday and so it was decided to have a little Christmas cheer; a small festive tree was set up and decorated. For me this must be the earliest domestic sign of Christmas, ever. Some shops started this year at the end of October.

I look forward to seeing you all on the 28<sup>th</sup> and again on December 10<sup>th</sup> at the Pines.

*Michael*

## FOR THE RECORD

We welcomed three visitors to our October meeting along with 69 members. Twenty-five people sent apologies, and thirteen members were silent.

### Please remember for the upcoming meeting:

- **Nametag** – please wear it.
- **Apologies** – to Vice President Sharon Major, Phone 479-5104  
Or email: sharonmajor.nz@gmail.com
- Sharon welcomes advance notice of any visitors to our meetings.
- If you have not already done so, could you please write on the back of your nametag a **contact name, address, and phone number**, to be used in any emergency. New nametags come with a slip with lines on the back, but older cards are without this.

## NOTICES

REBUS members who knew **Vince Keating** were sad to hear that he passed away in October. Vince and his wife Sybil were long standing members of our REBUS Club, and in April they were honoured at the monthly meeting, having been members for 25 years. Vince was president in the years 2003/4. Sybil and Vince were very active members, belonging to many groups, and enjoying visits and trips away. In his 90's, and using a walker didn't deter Vince from going on an away REBUS trip to New Plymouth. Vince was a very friendly person, interested in people, and loved a good chat. Our REBUS club sends sympathy and love to Sybil, and their family. Vince will be missed by his family and friends and those people at REBUS who have known him throughout his long association with REBUS.



**Bill Goldstone**, a stalwart of the Club, and also a former President, passed away at the end of October. Bill was awarded Life Membership in recognition of his many contributions to REBUS. He was an excellent organiser and took part in numerous REBUS activities over the years. For some time, Bill served as our photographer and was the custodian of the albums containing many treasured images of REBUS and PROBUS events. Bill organised the "Gold Card" walks for many years, and about two weeks before he passed away he met with the group for coffee, being unable to take part in the walk. Bill will be missed at the REBUS groups that he attended, and by his many friends. Bill's family said he was fit and active until a week before he passed away, and that he retained his usual interest in people and sense of humour to the last. Our thoughts and love are with Barbara and their family, who will miss him greatly.



**Pam Fletcher**, who joined REBUS in March this year, passed away as the result of an accident on 18th November. Pam grew up in Uttoxeter, a small town in Staffordshire, England, and came to New Zealand with another nurse and worked at Wellington Hospital. She worked in the Nursing Research team in the Management Services and Research Unit of the Department of Health, and many other Government Departments. Pam was a former President of SeniorNet and had many other interests. Pam and her husband Ross quickly became involved in REBUS after they joined. Pam was friendly and outgoing. Those who knew Pam will miss her very much. We extend our sympathy to Ross, at this very sad time.



## Beanies for Seafarers

This week twenty-three beanies knitted by REBUS members were delivered by Natasha to the Mission to Seafarers office, in Fryatt St on the Wellington waterfront. Tim was delighted with the wonderful knitting – especially as their stocks of beanies are running low. Thanks to members who knitted these. Beanies can be taken to the REBUS meeting on Friday, and in the New Year.



## REPORTS

### New Member Brian Dawkins Welcomed into REBUS



Brian grew up in Lower Hutt, and went to Victoria University to study Mathematics. He met his wife Linda while doing his PhD in Canada. When they returned to NZ Brian became a lecturer at Victoria. Brian enjoys singing with the Warblers.

### Short Talk: David Barnes

David grew up in the Wairarapa and went to school in Masterton and at Kuranui College in Greytown. He completed a four-year electrical apprenticeship at the local Power Board together with an Advanced Trade Certificate. The local power boards supported their communities. They fixed stoves, electric blankets and other items. David went to Tonga for a week to help with a metering upgrade program and found many faults. He also had to negotiate a contract with Siemens metering in Nuremberg Germany for 300 card operated prepayment meters with a night/day rate with a switch to operate the water heater only when power was cheap. This programme of prepayment for electricity wiped out all debt in the company within 5 years. Other power supply authorities followed their lead.

He taught electrical evening classes at Wairarapa College for three years from 1978-1989.

In 1992 Max Bradford destroyed the community owned power boards. Everybody had to apply for their jobs again. David applied for five jobs and got one from 1993 dealing with application for new supplies and answering technical questions about legislation. He retrained as an Electrical Inspector at WELTEC enjoying the customer contact with the new role, mostly on the phone. Forty staff were dismissed just before Christmas 1992. Over the next ten years the four retail shops in Wairarapa closed and in 1999 power supply companies could no longer retail electricity.

Within three months the company premises he had worked at in the Wairarapa for 31 years had become a Transit Bus Depot. After more restructuring with POWERCO in the Wairarapa during 2002, David shifted to Wellington working as a full-time electrical tutor with the Electrical Training Company (ETCO).





David served full-time as Regional Training Manager for sixteen years based in Wellington but was responsible for the region from New Plymouth to Nelson. In the last seven years he achieved the highest percentage pass rate for the central region of NZ as determined by the EWRB, receiving the "Tutor of the Year Award" presented by ITENZ in Hamilton.

Separate from work, there was travel with courses, biking, NZ great walks, and an Avalon Danube cruise, also travel along the river Thames in UK, plus several rail trips within NZ and many other parts of the world. He has had no further overseas trips after 2020 when Covid hit.

David has managed to get to do the work he was interested in, and yet keep working without any breaks during a time of many restructures. This is because he has both technical skills, and people skills. He has enjoyed helping people with customer service, as well as enjoying teaching students and seeing them succeed. He still has part time employment.

### Guest Speaker: Kate Torrens from Triton Hearing



Sonia Kokatnur and Kate Torrens

Kate Torrens is the Clinic Manager and Audiologist at Triton Hearing based in Paraparaumu. She spoke to us about how we hear, and also about some new technology to help those with hearing loss. Hearing loss is a problem. Hearing is a social sense and we hear sixteen thousand words a day. We also need to be listened to.

We hear through the following path: outer ear, inner ear and drum, cochlea, middle ear, and inner ear. The cochlea is the main auditory part of the ear and contains hair cells which detect sound and each hair cell detects and decodes one pitch. The message is sent to the brain which responds to sounds. Too much damage to the hair cells causes

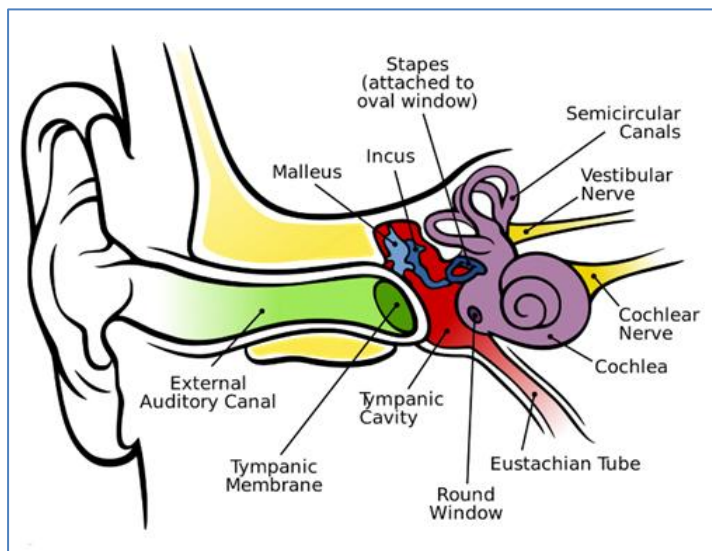
deafness. The middle ear can accumulate fluid which can be treated by inserting grommets to allow the fluid to drain out. The middle ear can also accumulate wax which may need to be removed by a specialist ear technician. The inner ear controls balance, and is close to the cochlea. Problems of the inner ear are Meniere's disease and vertigo.

A stroke can affect the brain understanding and decoding the sound messages. There is hearing loss if the sound messages do not get to the brain. If hearing loss becomes long term, then it is harder to get hearing back again. Dementia can be associated with hearing loss.

Hearing aids can be judged by how they look and also by the hardware and software they contain. The receiver can be in the hearing canal, or can be behind the ear, or can be in a custom shell in the ear. The custom shell hearing aids do have an echo problem.

Discrete hearing aids can be made of titanium which is sturdy and light, and can be nearly invisible. Lyric hearing aids are inserted deep into the ear canal and worn for months at a time.

Hearing Aid technology may use basic technology such as amplifiers, but they need quiet surroundings. A crash may cut out noise. Directional microphones may be useful. AI versions are at the stage of early



research. Safety is important. Modern hearing aids may have Bluetooth and use radio waves. Auracast are designed to provide a system where one source is picked up by multiple listening devices, but the system is not yet installed to provide this in many places.

Modern hearing aids can connect to smart TVs, and use remote microphones, as well as have an app to change hearing aid settings. New technologies are health aids, and AI can be trained to respond to the environment.

NALscribe can translate words to text. Remote hearing can use Tele-Audiology to provide virtual care. Some hearing aids can be waterproof and dunk proof to 50 cm. Risk free trials may be available. It is best to get supported, and have after care support. The NZAS (New Zealand Audiological Society) members belong to a professional body committed to excellence in hearing health care.

### Visit to Christ Church – 19th November



On a fine, but windy day, twenty-two members visited Christ Church in Taitā. After an interesting talk about the Church history, members strolled around the ground, stopping at various graves.

Christ Church holds a New Zealand Historic Places Trust category 1 registration.

In 1853, Taitā had just over 30 households. Many of these pioneer families are buried in the churchyard, and some of their descendants are still well known in the Hutt Valley.

In 1948, a new train line through the valley to the Wairarapa cut the Church off from the rapidly growing community, and the Anglican Church decided to move the church to Stokes Valley. This caused an outcry and a public meeting in 1950 voted to leave the Church on its original site. The Preservation Society was formed and has since taken responsibility for the care and maintenance of the church and its graveyard. Many weddings are held in the Church.

Members enjoyed a beautiful afternoon tea in a nearly completed functions building.

*(Photo right – REBUS member Angela Hill with one of the cushions she has embroidered for Christ Church).*



### Walking Group

The group is missing one of its regular participants, Bill, who always had an input into, and led discussions about a large range of topics. We will remember Bill both at the normal weekly short walks and Gold Card events which he organised for a time.

On our weekly walks and with the improvement in the weather we are keeping an eye on the quality of domestic gardening efforts and the various tree blossoms, on our regular routes.

The November Gold Card walk was organised by Helen Kennard who pulled a sunny day and good choice of lunch venue at Seatoun. From the Seatoun beach we observed a large car carrier heading towards its Aotea Quay berth and it brought home to us how far some of the Wahine survivors were blown from nearby Barrett's Reef to Eastbourne. Lunch at Archimboldi was very enjoyable with green eggs and ham being one of the items of fare available.

*Bernie Brown*



## Garden Group Report



*Blossom Valley – Tree in bud*

The last couple of months have been somewhat disappointing for the Garden Group outings as Mother Nature has not come to the party and recognised she is supposed to be in Spring with everything sprouting!

A group of us went off to Blossom Valley in mid-September to check out the array of blossom trees we thought would be in full bloom by then. The trees were only just budding so we didn't manage to see them at their best. A saving grace was that the day was wonderfully sunny so our wander around the paths at Blossom Valley was a delight as was our lunch out together at Figtree Cafe in Upper Hutt.

October's outing had a planned trip to view apple blossoms in Pauatahanui however that trip was cancelled mostly due to the inclement weather. We were not going to let that deter us from a lunch out though, so five of us managed to get together at Plimmerton for a lunch and a chat.

November's trip was going to be a look at the heritage roses in the Pauatahanui Burial Ground, but again the slow season means that the trip has been deferred until the **1st December**, when the roses should be at their best. We are looking forward to the New Year with some more settled weather to provide us with some interesting garden outings.

*Viv Forrest*

## Planes, Trains & Automobiles Group

Allan Shuker arranged for the Group to visit the Police Maritime Unit and National Dive Squad on 14 November. The Unit is based at the Old Ferry Terminal, originally built in 1912 to service Eastbourne Ferries. The Maritime Unit has its origins going back to 1841.

The Unit covers Wellington Harbour, Cook Strait and the Marlborough Sounds areas. The Maritime Unit work alongside the Conservation Department, Border Security, Search and Rescue, the Navy, Airforce and of course the Police. The Unit comprises of 3 vessels:

- The Lady Elizabeth IV
- The Hukatai (Seafoam) for close inshore work
- Inflatable vessel for Diving work

We were given a tour of The Lady Elizabeth which was built in 2010 in Whanganui and is of Aluminium construction. She is 18 meters long and 6 meters wide with a half meter draft. A Catamaran, she is powered by twin 2,000 horsepower Rolls Royce engines capable of reaching 37 knots with jet propulsion units. She carries 4,000 litres of fuel and at full speed would burn 300 litres an hour. The Lady Elizabeth is due for replacement within the next few years.

*Richard Campbell*



The group will have a visit to **Southward Car Museum** on the December meeting date of **Thursday 11th December** and a visit to a cafe after. If anyone is interested in this visit let me know at [hdfriedlander@gmail.com](mailto:hdfriedlander@gmail.com) or 021 153 2867

*Harry Friedlander*

## **Theatre Review of Monument at the Circa**

Writer: Emily Sheehan; Director: Lyndee-Jane Rutherford

Edith Aldridge (Mel Dodge) is about to address the public as the youngest woman ever to be elected prime minister, having been chosen by her political party to take over the leadership from her recently deceased father. Enter Rosie (Tara Canton), the young make-up artist, who will prepare Edith for the cameras' cruel scrutiny.

After a scare about Rosie's unauthorised arrival in Edith's hotel bedroom (is she an assistant or an assassin?) the couple's conversation leads to unanticipated revelations. Rosie's past retail customers interpret her careful attentions as sympathetic invitations to pour out their domestic troubles, often of a violent nature, while she does her utmost to avoid giving advice. At the same time, she admits to a total irresponsibility with money, relying upon a generous boyfriend to bail her out of debt time and again.

This form of self-revelation is infectious. We learn that Edith's public persona as the happily married wife of the supportive husband is a charade. The \$200 bouquet arriving as a congratulatory gift to Edith is from her husband's mistress. The potentially scandalous circumstances of her father's recent demise emerge: reputation-wrecking sexual liaisons are hinted at which had to be covered up by his security detail. The audience is presented with the question: where is honesty in the lives of politicians, even to themselves? The two women bind together in a growing conviction that integrity is as attractive to the public as the sugar-coated artificialities of the PR industry. They seal it with a swap of clothing to show their unanimity of values.

I enjoyed Emily Sheehan's irony. The play promotes authenticity and trustworthiness as virtues via a conversation between a politician, expert in misleading and deceptive speech, and a make-up artist, expert in masking and distorting physical appearance.

However, there were problems with the production. Mel Dodge looks her age at about 50, too old to play a woman in her late thirties with tampons in her handbag talking about having a child one day. In the intimacy of the Circa B theatre, the discrepancy between such a real age and that of the character is jarring. Also, she is only just over 5 ft tall. Rosie Canton's slimness and above average height emphasised a difference which invited ridicule when they swapped clothing in the last few minutes and each fitted so perfectly into the other's costume.

In contrast to Mel Dodge's disappointing performance, Tara Canton's as the cheeky, angry, charming, sarcastic, and witty spendthrift who invites openness with everyone who meets her was superb. We need to applaud her and keep her.

*Peter Clemerson*

## **Lunch Group**

Seven members of the REBUS lunch group lunched at the 1841 in Johnsonville, on Wednesday 29th October 2025. As usual good conversation and a big selection of enjoyable food and drink options. This was our last outing for the year, and we look forward to the club's Christmas lunch at The Pines.

*Raey Butterworth*

## **The Woodmancote Warblers Singing Group**

The Warblers met on Tuesday 11th November, at our usual wonderful venue. We even entered it through an arch of wisteria in full bloom. We are very grateful to Pat and Peter for hosting us throughout the year. There were sixteen of us there, including four men, who enhanced our singing. After a warm up, and singing a couple of good old songs, we got on to practicing our Christmas repertoire for the REBUS Christmas Lunch.

*Ken Nelson*

## **ROMEOS (REBUS Old Men Eating Out) Lunch Group**

Nine ROMEOS met on Wednesday 12th for their final luncheon for 2025. For a change from our regular eating places, we met at the Vista Cafe in the Johnsonville Club for hearty meals, with generous portions. We will add this venue to our list for future lunches.

*Ken Nelson*

## **GROUP ACTIVITIES**

Please contact the group co-ordinator if you would like to join one of our groups. Photos of group activities and a timetable of when each group meets are on our website (under Interest Groups).

### **Interest and Activity Groups and Co-ordinators** (NV = no vacancies)

<b>Book Group 1: NV</b>	Geraldine George	479 0004
<b>Book Group 2: NV</b>	Ros Paterson	479 3131 or 021 214 7046
<b>Craft Group</b>	Penny Harrison	479 9302
<b>Dinner Group 1: NV</b>	Judith Littlejohn	027 361 3338
<b>Dinner Group 2: NV</b>	Jenny Middlemass	479 2638 or 021 0267 9916
<b>French Speaking</b>	Dawn Ferguson	dawncferguson@gmail.com
<b>Garden Group</b>	Viv Forrest	021 069 0397
<b>Lunch Group</b>	Raey Butterworth	027 342 1121
<b>Planes, Trains &amp; Automobiles</b>	Harry Friedlander	021 153 2867
<b>ROMEO Men's Lunch Group</b>	Ken Nelson	939 9166 or 021 128 3323
<b>Walking Group</b>	Bernie Brown	479 2804
<b>Woodmancote Warblers Singing</b>	Ken Nelson	939 9166 or 021 128 3323

### **Office Holders**

<b>President</b>	Michael Harrison	021 640 618
<b>Vice President</b>	Sharon Major	479 5104 or 021 884 611
<b>Secretary</b>	Stella Thorp	021 299 4052
<b>Treasurer</b>	David Hutton	479 1864 or 027 446 2656
<b>Past President</b>	Judy Whiteside	479 5051 or 027 607 5114
<b>Speakers</b>	Natasha Nahkies	027 240 4402
<b>Theatre Visits</b>	Peter Clemerson	938 5923
<b>Organising Visits</b>	Committee Member needed – please contact the President	
<b>Short Talks/Votes of Thanks</b>	Christine McKenna	021 107 1675
<b>Newsletter</b>	Ros Lambrechtsen	938-5911
<b>Almoner</b>	Ngaio Taylor	479 3183 or 021 0242 2150

### **Outside Committee:**

<b>Web &amp; Communication</b>	Heather Nelson	939 9166 or 021 205 4276
<b>Audio Visual System</b>	Murray Major	479 5104 or 021 881 961
<b>Morning Tea Roster</b>	Viv Forrest	021 069 0397